

Guideline for support of CTG external plant

This Guideline is intended for guidance only. Contractors are reminded that in addition to following this Guideline, they should take all necessary precautionary measures to protect underground services as stipulated in the latest version of Conditions of Excavation Permit or Conditions of Emergency Excavation Permit issued by Highways Department and other relevant legislative requirements. Moreover, the contractors must exercise due diligence and all reasonable care in carrying out their work in conformity with sound technical and engineering practice. The China Telecom Global Limited(hereinafter referred to as ‘CTG’) shall not be liable for any losses and/or damages suffered by any contractors arising out of or in consequence of their work taken or from reliance upon the whole or any part of the contents of this Guideline.

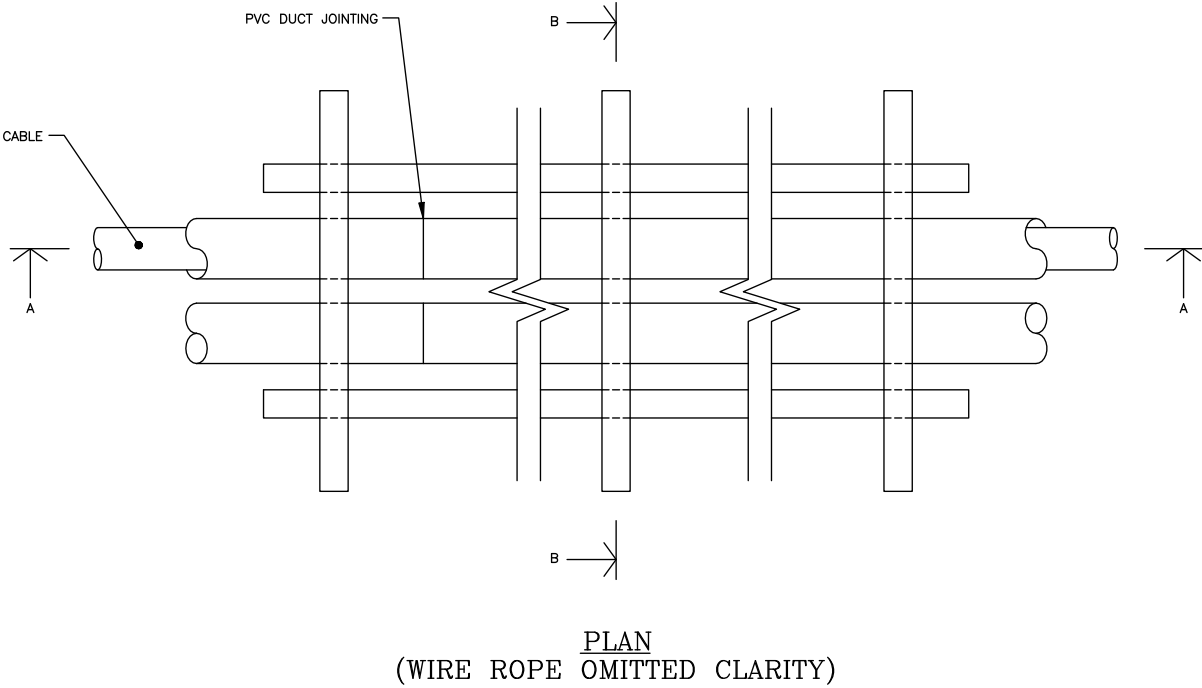
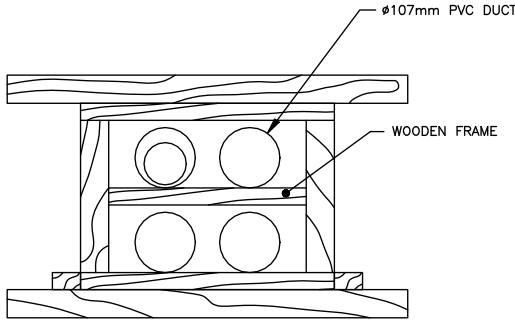
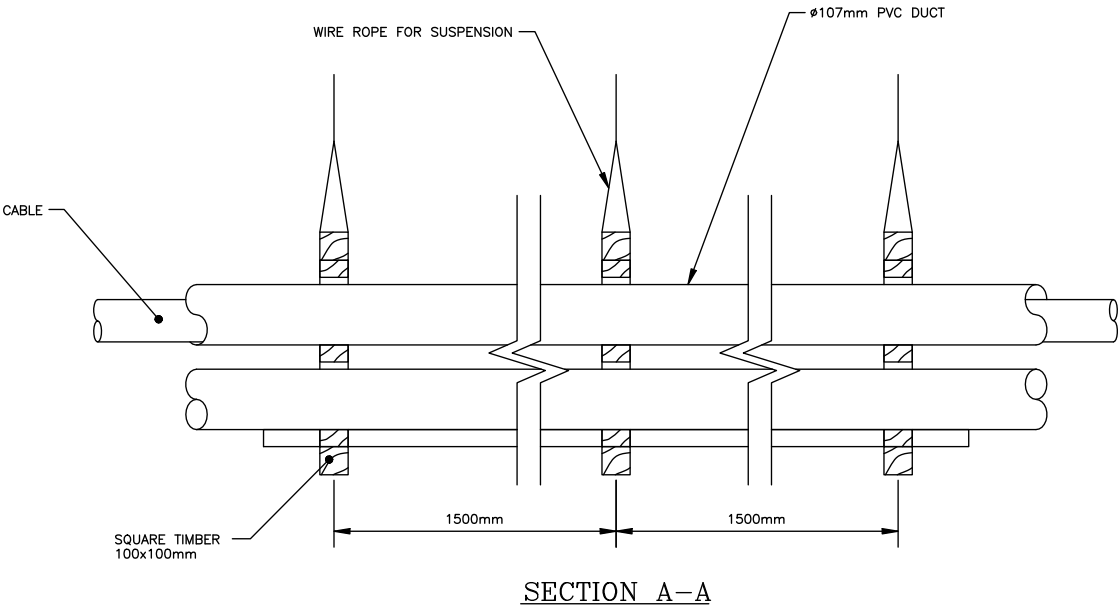
1. Type of service : Telcom cable / duct

- Quantity and size of the supporting beams, and longitudinal beams will be subject to the weight and size of duct block.
- Max. distance between supports is 1.5 metres.
- Any broken duct should be well repaired.
- Any duct end should be sealed.
- Supporting work should be under CTG site supervision.

2. Type of service : Jointing chamber

- Quantity and size of the supporting beams, longitudinal beams will be subject to the weight and size of jointing chamber.
- Max. distance between supports is 1.5 metres.
- Access for emergency cable work should be maintained at all times.
- Supporting work should be under CTG site supervision.

NOTES



REV.	DESCRIPTION	DATE	BY
			

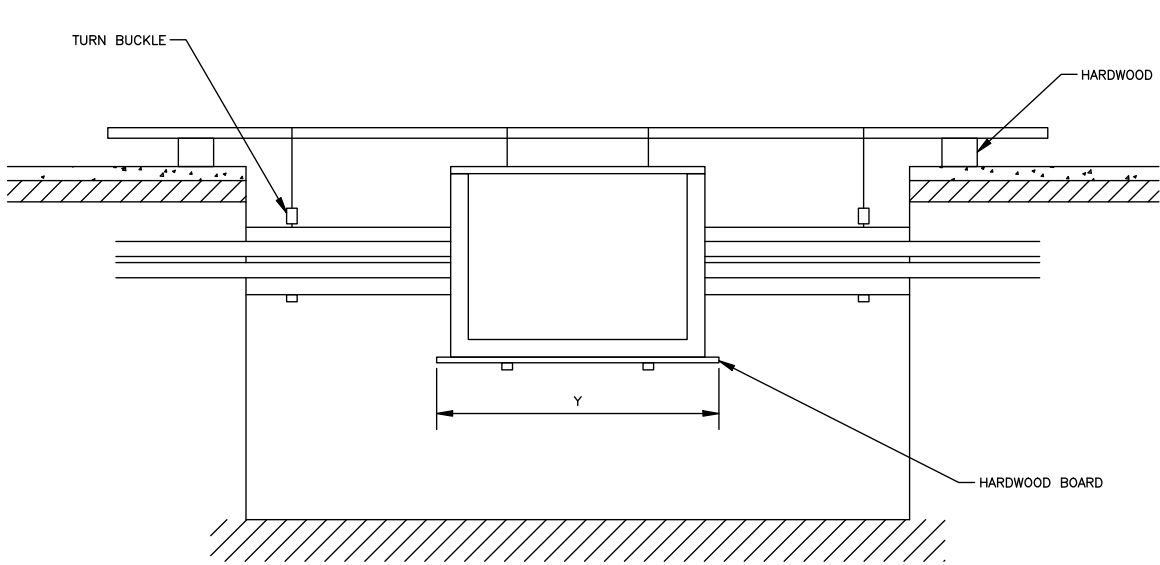
DESCRIPTION			
TYPICAL METHOD OF SUPPORTING DUCT			

AREA			
------	--	--	--

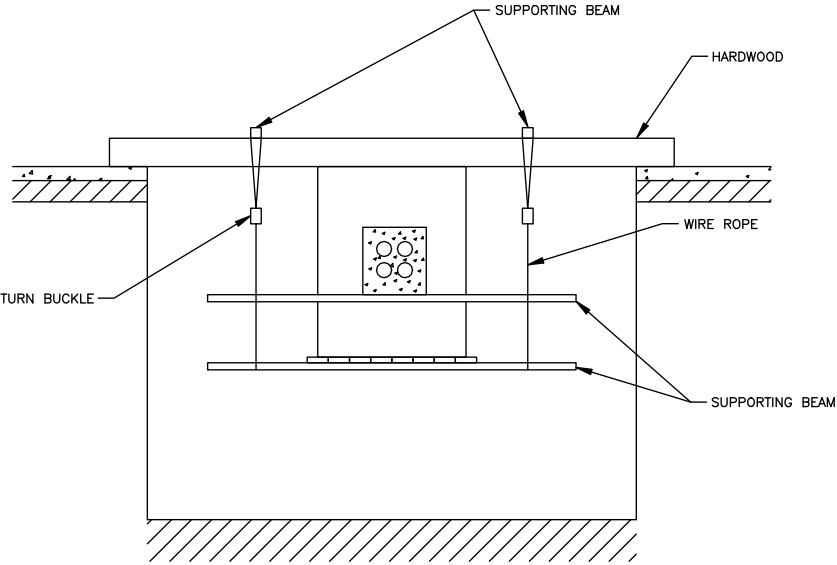
	INITIAL	DATE
DESIGNED BY		
DRAWN BY		
CHECKED BY		
APPROVED BY		

DRAWING No.: CTG-UG-01	SCALE: NTS	DATE: 25 Nov 2024
C/Ref.:	REV.:	

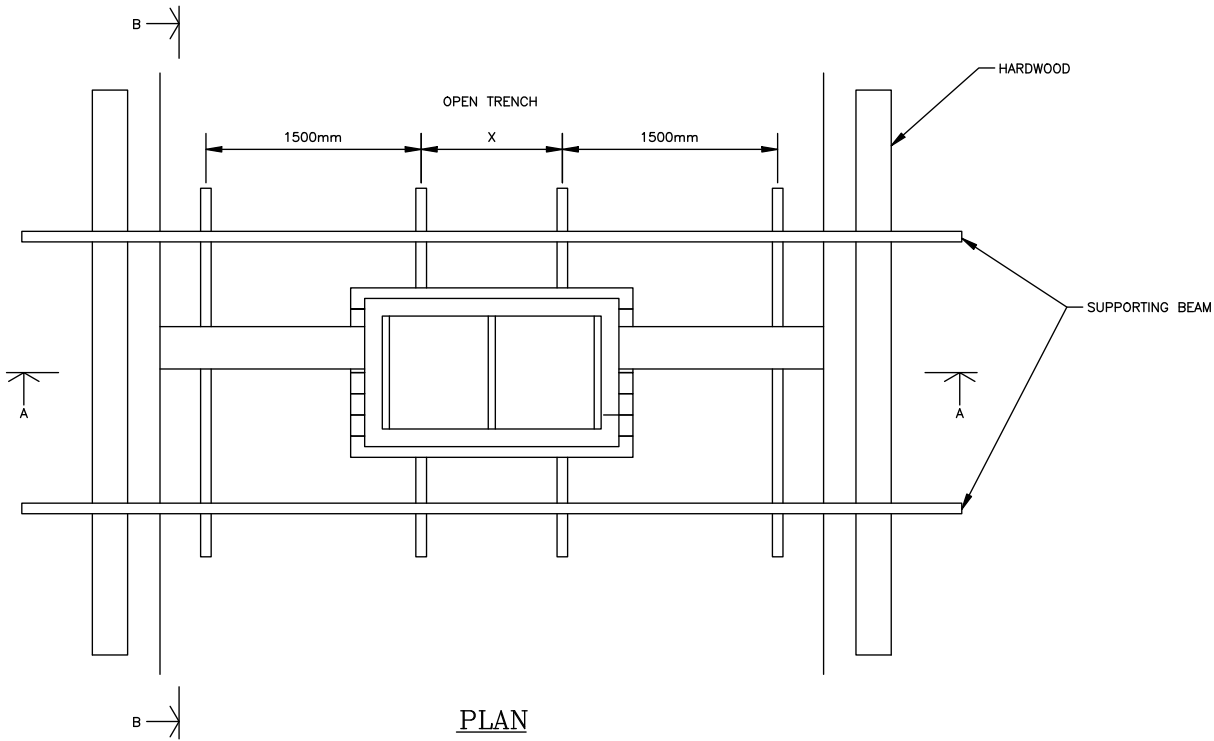
NOTES



SECTION A-A



SECTION B-B



PLAN

DISTANCE		
	X	Y
JB 1	600mm	1300mm
JB 3	1000mm	2000mm
JB 7	1500mm	3200mm

REV.	DESCRIPTION	DATE	BY
------	-------------	------	----



DESCRIPTION
TYPICAL METHOD OF SUPPORTING JOINTING CHAMBER IN OPEN TRENCH

AREA

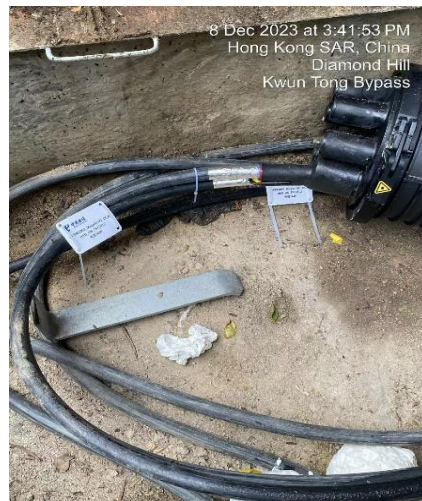
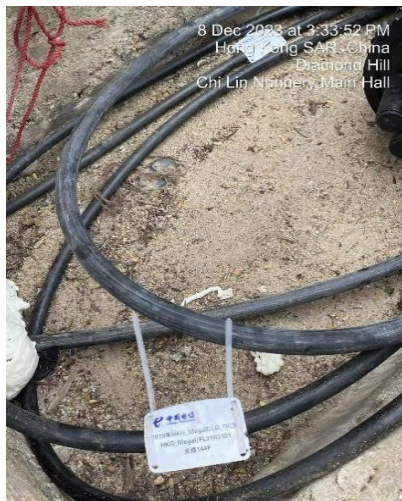
	INITIAL	DATE
DESIGNED BY		
DRAWN BY		
CHECKED BY		
APPROVED BY		

DRAWING No.: CTG-UG-02	SCALE: NTS	DATE: 25 Nov 2024
C/Ref.:	REV.:	

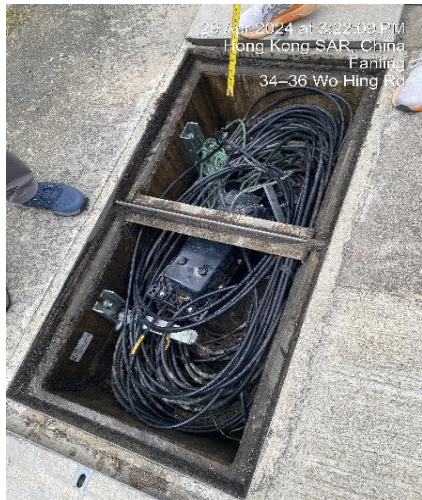
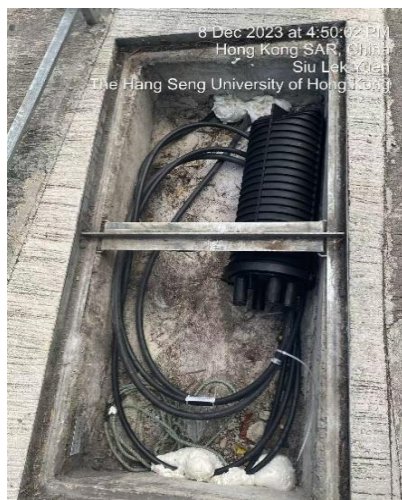
Attachment 15
Photos of Services of China Telecom Global Limited



PVC Duct



Fiber-Optic Cable



Cable Joint

Attachment 15

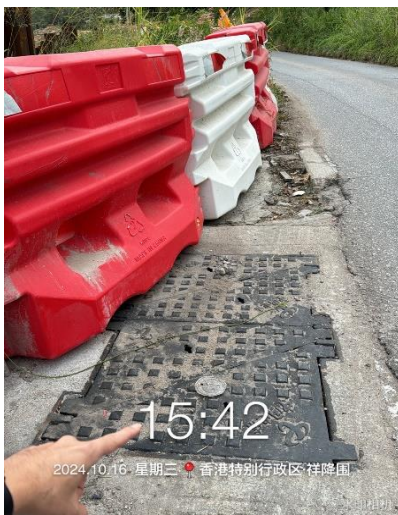
Photos of Services of China Telecom Global Limited



Joint Chamber (Concrete Type)



Joint Chamber (Recess Type)



Joint Chamber (Heavy Duty Type)